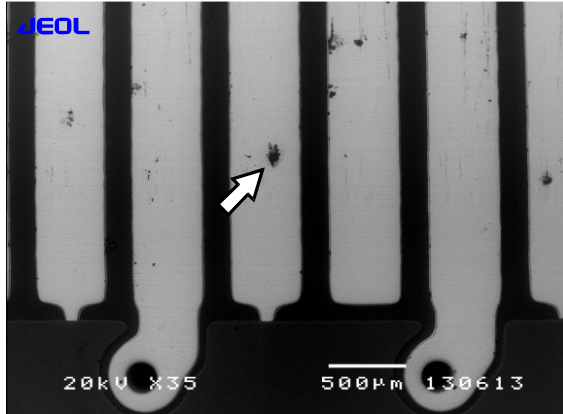


Report for : Do SEM Lab Co.,Ltd.

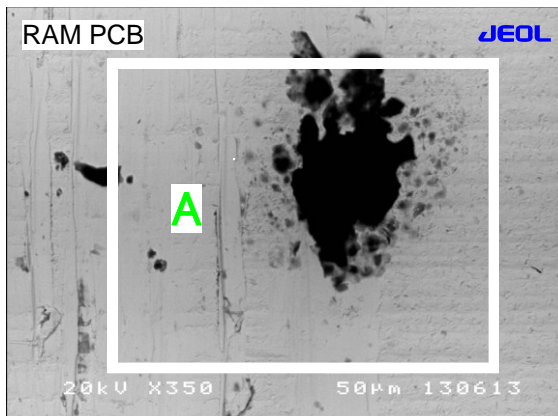
Address : 88 Moo.8 Klongsam Klonglaung Pathumtani 12120

Division : QA Tel. : (+66)-2832-83282 Fax. : (+66)-2832-83283



SEM Condition :
Acc. Voltage : 20 kV
Magnification x 35
Scale : 500 µm
SEM mode : LV (Low Vacuum)
Vacuum Pressure : 30 Pa.
Image : BEI COMPO
WD : 20 mm.
Au Coating : No
Sample : Non Conductive

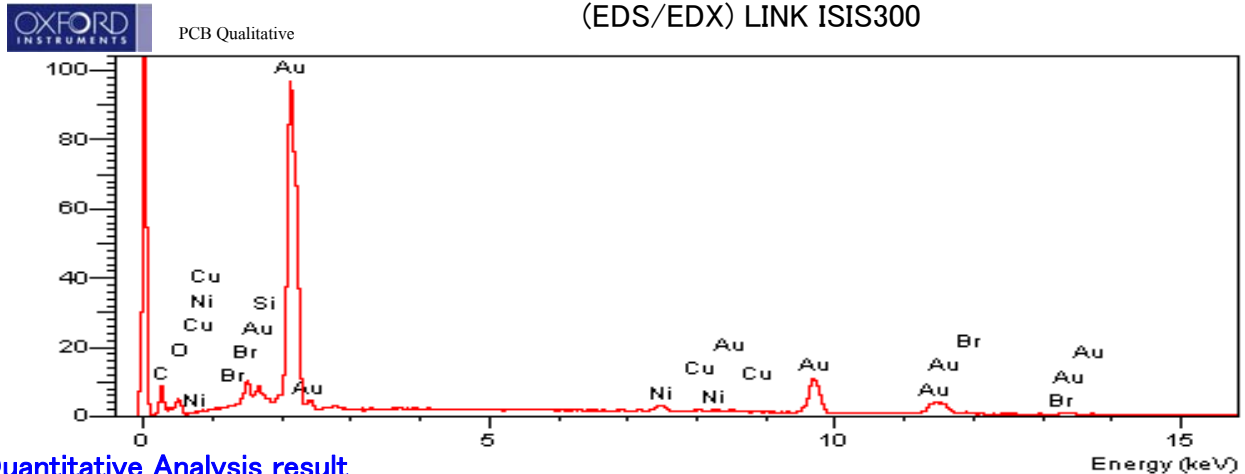
SEM micrograph by JEOL Scanning Electron Microscope (SEM) JSM-5410LV
Sample Name : RAM PCB Rusty Part Analysis Area : Area A



SEM Condition :
Acc. Voltage : 20 kV
Magnification x 350
Scale : 50 µm
SEM mode : LV (Low Vacuum)
Vacuum Pressure : 30 Pa.
Image : BEI COMPO
WD : 20 mm.
Au Coating : No
Sample : Non Conductive

Qualitative Analysis Spectrum

Element and Chemical Analysis by
Oxford Energy Dispersive X-ray Spectrometer
(EDS/EDX) LINK ISIS300



Quantitative Analysis result

Analysed all elements and normalised results.

Elmt	Spect. Type	Element	Atomic %	Compound %	Nos. of ions
C	K ED		11.13	CO2 40.78	0.77
Ni	K ED		1.38	NiO 1.76	0.02
Cu	K ED		0.34	CuO 0.42	0.00
Br	K ED		1.24		0.01
Au	M ED		49.74	Au2O3 55.80	0.21
O			36.17		1.87
Total			100.00	98.76	

Analyzed by

Mr. Vanlop Tanjitrong
Do SEM Analytical Laboratory
www.dose24hr.com

Mr. David Lee
Do SEM Lab Manager Div.