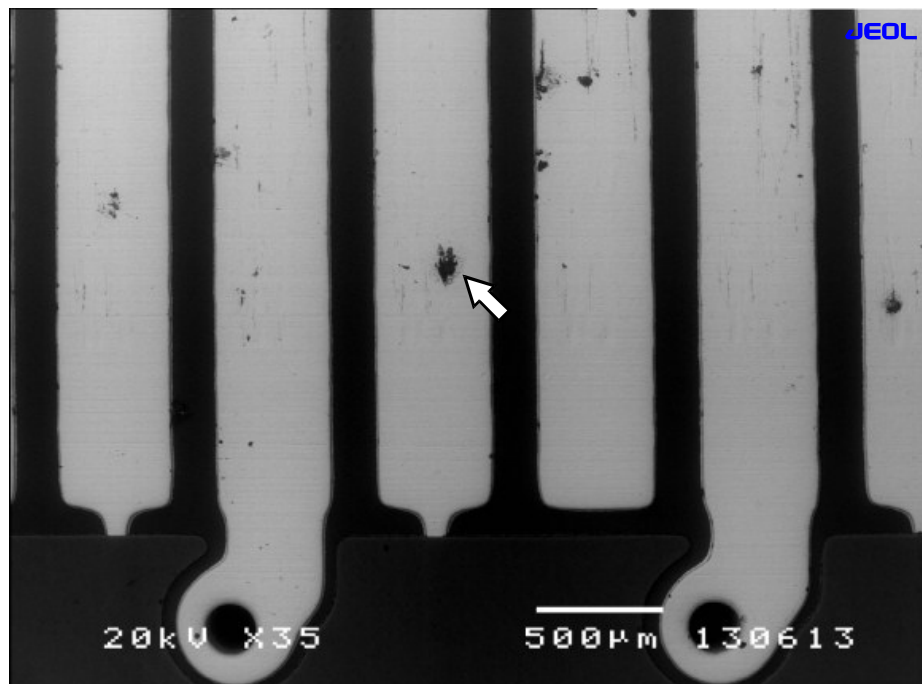


Report for : DSPCB Co.,Ltd.

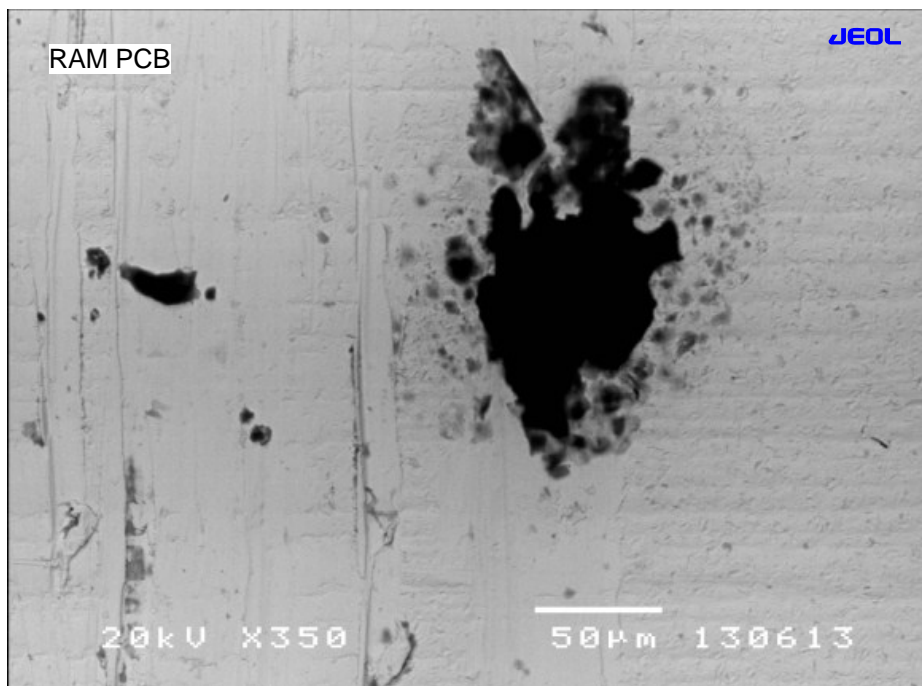
Address : 88 Moo.8 Klongsam Klonglaung Pathumtani 12120

Division : QA Tel. : (+66)-2832-83282 Fax. : (+66)-2832-83283



SEM Condition :
Acc. Voltage : 20 kV
Magnification x 35
Scale : 500 μm
SEM mode : LV (Low Vacuum)
Vacuum Pressure : 30 Pa.
Image : BEI COMPO
WD : 20 mm.
Au Coating : No
Sample : Non Conductive

SEM micrograph by JEOL Scanning Electron Microscope (SEM) JSM-5410LV
Sample Name : RAM PCB Rusty Part Analysis Area : Area A , Magnification x 35
Report for : DSPCB Co.,Ltd.



SEM Condition :
Acc. Voltage : 20 kV
Magnification x 350
Scale : 500 μm
SEM mode : LV (Low Vacuum)
Vacuum Pressure : 30 Pa.
Image : BEI COMPO
WD : 20 mm.
Au Coating : No
Sample : Non Conductive

SEM micrograph by JEOL Scanning Electron Microscope (SEM) JSM-5410LV
Sample Name : RAM PCB Rusty Part Analysis Area : Area A , Magnification x 350
Report for : DSPCB Co.,Ltd.

Analyzed by

Mr.Vanlop Tanjitrong
Do SEM Analytical Laboratory
www.dosem24hr.com

June 3, 2013

Mr.David Lee
Do SEM Lab Manager Div.

June 3, 2013