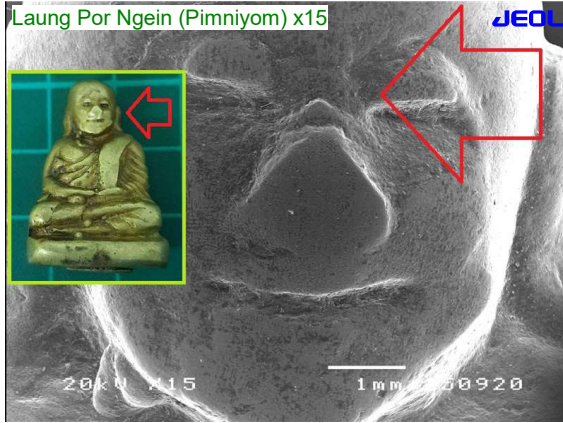


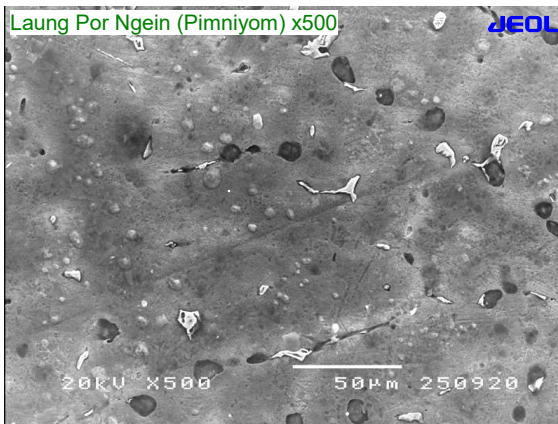
Analysis results for : **Kamsao Krankla 08 1446 4895**

24/5 Moo.4 T.Wangtakien, A.Muang Chachoengsao, Chachoengsao 24000



SEM Condition :
 Acc. Voltage : 20 kV
 Magnification x 15
 Scale : 1 mm.
 SEM mode : HV (High Vacuum)
 Vac Pressure : 9.60x10⁻⁵ Pa.
 Image : SEI
 WD : 20 mm.
 Pd Coating : No
 EDS Analysis : No

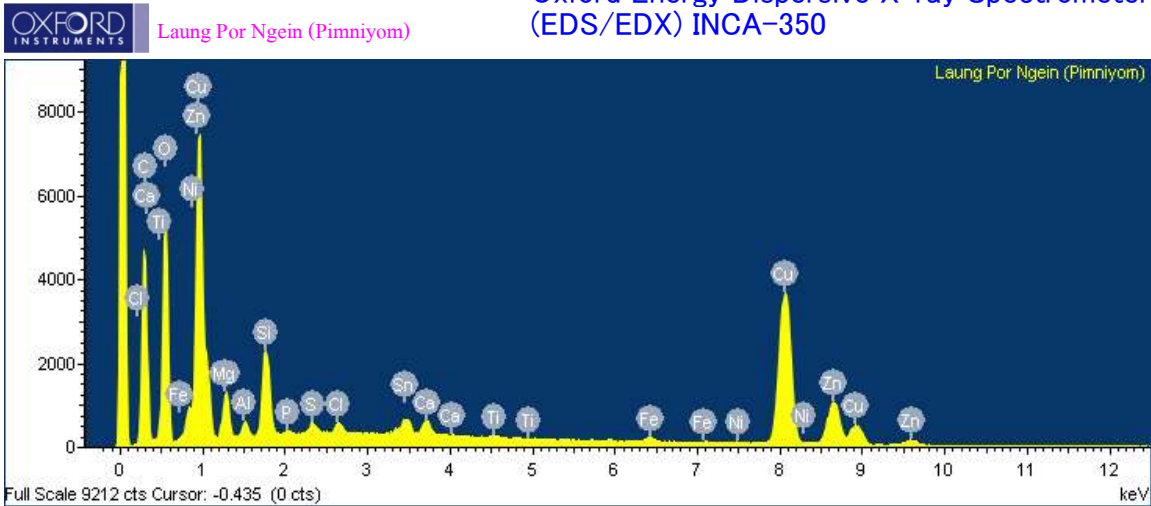
SEM micrograph by JEOL Scanning Electron Microscope (SEM) JSM-5410LV
 Sample Name: Laung Por Ngein (Pimniyom) , Analysis Area: Magnification x500



SEM Condition :
 Acc. Voltage : 20 kV
 Magnification x 500
 Scale : 50 µm
 SEM mode : HV (High Vacuum)
 Vac Pressure : 9.60x10⁻⁵ Pa.
 Image : SEI
 WD : 20 mm.
 Pd Coating : No
 EDS Analysis : Yes
 Analysis Time : 300 sec

Qualitative Analysis Spectrum

Element and Chemical Analysis by
 Oxford Energy Dispersive X-ray Spectrometer
 (EDS/EDX) INCA-350



Quantitative Analysis result

Processing option : All elements analyzed (Normalised)
 Number of iterations = 6

Element	Weight%	Atomic%
C K	33.66	54.04
O K	26.45	31.88
Mg K	1.88	1.49
Al K	0.41	0.29
Si K	2.26	1.55
P K	0.09	0.06
S K	0.22	0.13
Cl K	0.30	0.16
Ca K	0.27	0.13
Ti K	0.10	0.04
Fe K	0.31	0.11
Ni K	0.13	0.04
Cu K	24.24	7.36
Zn K	8.58	2.53
Sn L	1.10	0.18
Totals	100.00	

Analysed by

Mr.Manatsanan Sakthanakornsakul
 Do SEM Analytical Services
 www.dosem24hr.com
 Sep 25,2020